



43121 Victoria Road, Enclave Acton, Acton, W3 6UE
£1,400



43121 Victoria Road, Enclave Acton, Acton, W3 6UE

£1,400

Your New Home Comes With Perks | 30+ Amenities Across 5 Floors, Spa, Gym & a up to £1,750 Move-In Gift Card.

Five full floors of premium amenities include a state of the art gym, tranquil spa, golf simulator, music room, games lounge, rooftop terraces with panoramic views, co-working lounges, private library, meeting rooms, and private dining spaces. On-site management, pet-friendly, and community-focused.

All-inclusive rent covers utilities, Wi-Fi, and council tax in one fixed monthly cost of £400 no surprises, no hassle.

Move In & Get Rewarded:

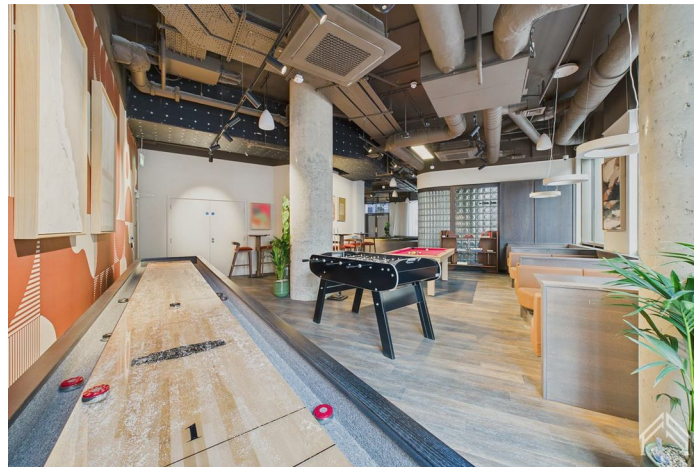
As a welcome gift, every new resident receives a Prezee Smart eGift Card upon moving in - yours to spend across hundreds of major brands including retail, dining and travel. The card is delivered straight to your inbox, ready to use online or in-store from day one.

Terms apply. Gift card is issued following move-in once all conditions are met and is subject to the tenancy proceeding as agreed.

Description



Situation

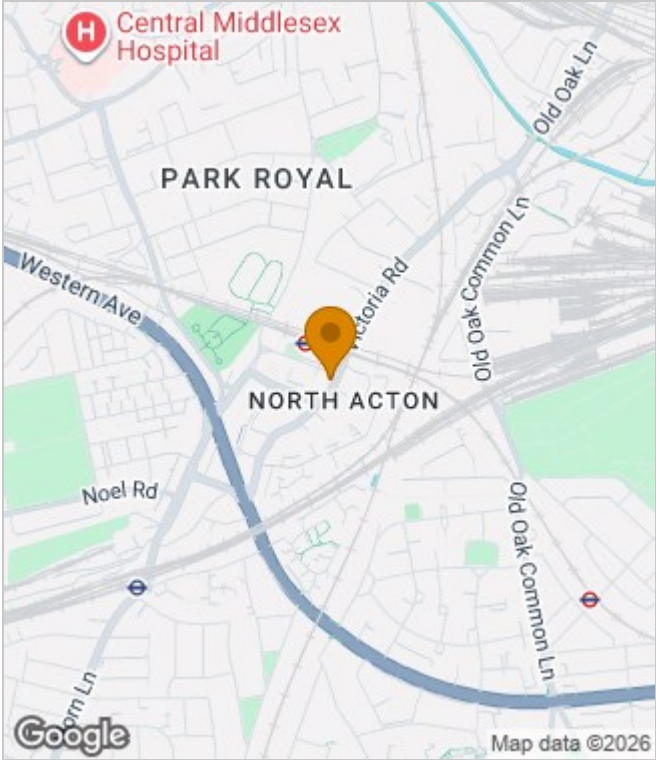


Furnished
Council Tax Band: B
Available:

Floor Plans



Area Map



Energy Performance Graph

Energy Efficiency Rating		Current	Potential
Very energy efficient - lower running costs			
(92 plus) A			
(81-91) B		81	81
(69-80) C			
(55-68) D			
(39-54) E			
(21-38) F			
(1-20) G			
Not energy efficient - higher running costs			
England & Wales		EU Directive 2002/91/EC	

These particulars, whilst believed to be accurate are set out as a general outline only for guidance and do not constitute any part of an offer or contract. Intending purchasers should not rely on them as statements of representation of fact, but must satisfy themselves by inspection or otherwise as to their accuracy. No person in this firm's employment has the authority to make or give any representation or warranty in respect of the property.